

# MICHIGAN STATE UNIVERSITY

## Plant Science Research Greenhouse (PSRG) Facility PSRG Executive Committee Meeting September 5, 2024, 11:00 am

Present: Jeremy Johnson (FOR), Bjoern Hamberger (BMB), Linda Hanson (USDA), Cody Keilen (Growth Chamber Facility), Roberto Lopez (HRT), David Lowry (PLB), Eric Olson (PSM), Chrislyn Particka (PSRG, Director), Erik Runkle (HRT)(Co-Chair), Thomas Sharkey (BMB, PRL)(Co-Chair)  
Absent: Hannah Burrack (ENT), Mary Hausbeck (PSM), Carolyn Malmstrom (PLB)

Erik Runkle called the meeting to order at 11:00 am

A summary of the discussion about each agenda item is included below:

*Updates on greenhouse renovations and new headhouse:* Chrislyn gave an overview of the project, including a timeline. Overall, the project is on schedule with only a few minor delays. Slides that she shared about the construction timeline are included at the end of this document.

*Restructuring of greenhouse management/oversight:* Erik reported that some changes are being made to Chrislyn's position, including that she will be reporting to George Smith, Director of AgBioResearch (ABR). The purpose and function of the greenhouse committee will remain unchanged, and the committee co-chairs (Erik and Tom) will continue to meet regularly with Chrislyn and provide assistance and input when needed. The overall oversight of the greenhouses will be moved from the Research Technology Support Facility (RTSF) to ABR; some administrative responsibilities will be overseen by ABR, while others will remain with RTSF. Access to the greenhouses will continue for all colleges, departments, and faculty.

*Greenhouse space subcommittee:* David reported that the space subcommittee met in the spring shortly before the end of the semester. Over the summer, the subcommittee reviewed both the Greenhouse Space Allocation document as well as the greenhouse space request survey. These documents will be sent to the entire committee for review.

*Proposed changes to greenhouse user fees:* Erik provided a review of the current greenhouse fee structure including how and why it was developed and the 100%, 80%, and 60% quality multipliers that are used in the fee calculation. There is need to update the fee structure given that the new and renovated greenhouse are of higher quality than existing greenhouses. Chrislyn introduced the new proposed fee structure, including the new 100%, 90%, 80%, 70%, and 60% quality multipliers, which better reflects the disparity in environmental control than the current multipliers. This proposed fee structure does not increase costs for any existing greenhouses and represents a <1% increase in potential income from user fees. The committee discussed the proposed fee structure and were overall supportive. There was also discussion about implementing a 2% annual fee increase to account for inflation, like the growth chambers. Committee members were asked to take this issue to their respective departments

Chrislyn Particka, PhD  
Director

Plant Science  
Research  
Greenhouse  
Facility

Research Technology  
Support Facility

612 Wilson Road  
S-20 Plant Biology Labs  
Michigan State University  
East Lansing, MI  
48824 USA

email: [chrislyn@msu.edu](mailto:chrislyn@msu.edu)

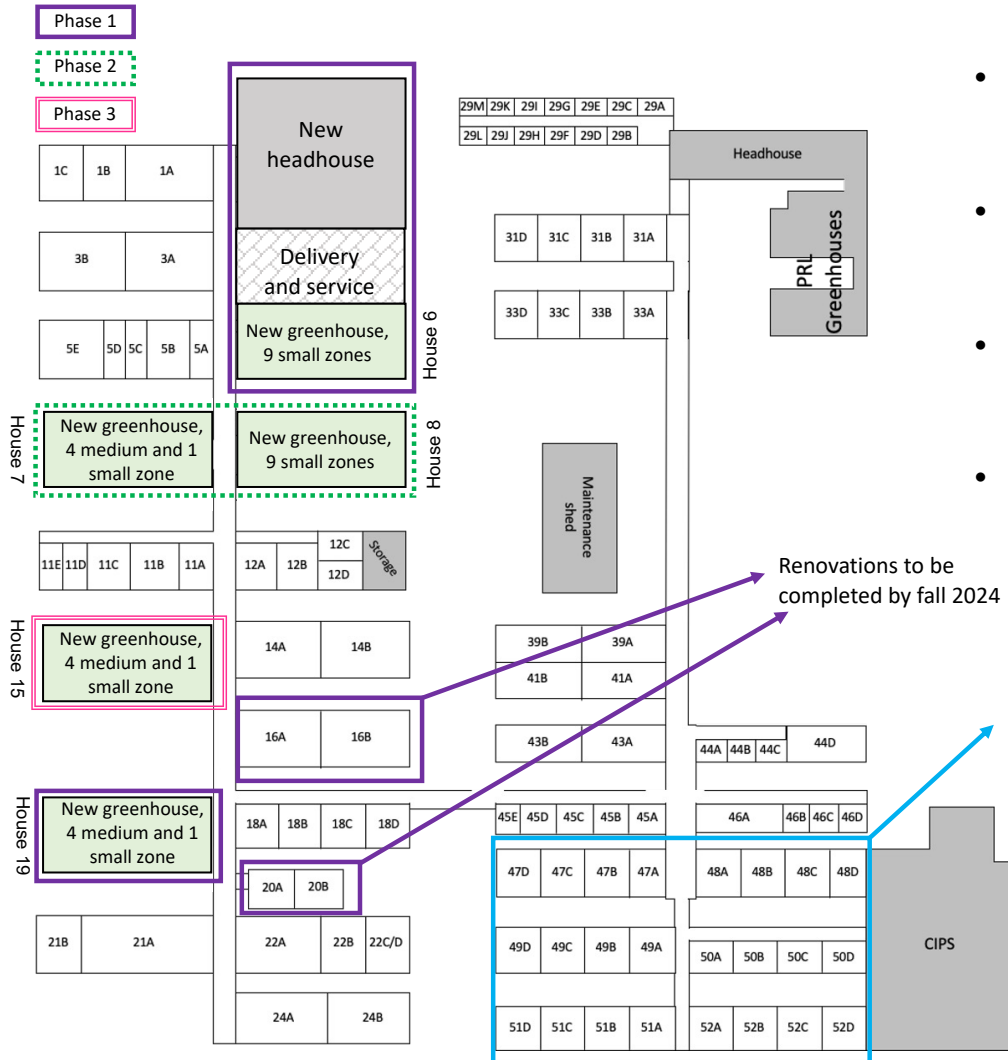
[https://rtsf.natsci.msu.edu/about/  
directory/research-  
greenhouse-complex/](https://rtsf.natsci.msu.edu/about/directory/research-greenhouse-complex/)

MSU is an affirmative-action,  
equal-opportunity employer.

and solicit feedback. The tentative plan is to implement the new fee structure on 7/1/25 and begin a 2% annual increase in user fees on 7/1/26.

The meeting adjourned at 12:05 pm. Some committee members walked with Chrislyn to the new greenhouse 19 for a short tour.

By end of state-funded project



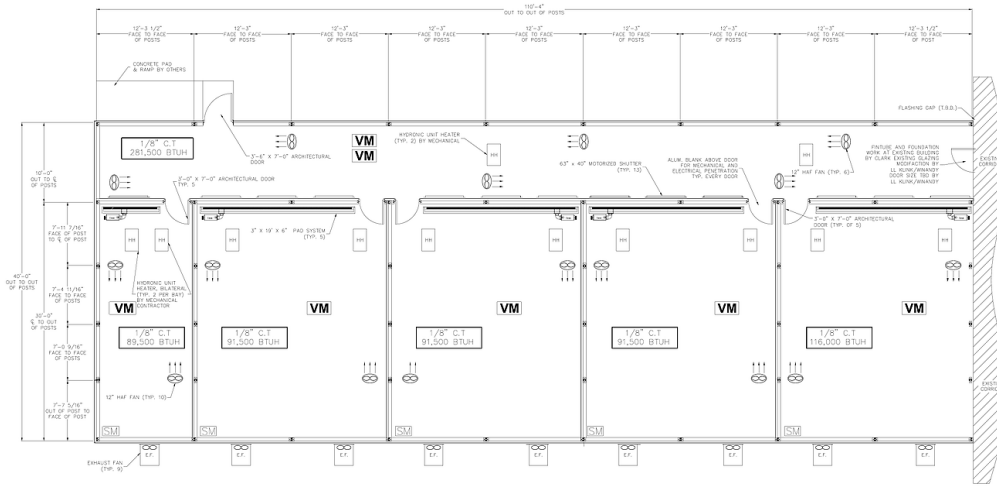
**Timeline**

- Fall 2024: Completion of renovations to houses 16 and 20 and new house 19 opens
- January 2025: New house 6 opens. Demo of houses 8 and 10 to follow.
- April 2025: New headhouse opens. Demo of current headhouse to follow.
- January 2026: Move into new houses 7 and 8. Demo of houses 13 and 15 to follow.
- November 2026: Move into new house 15.

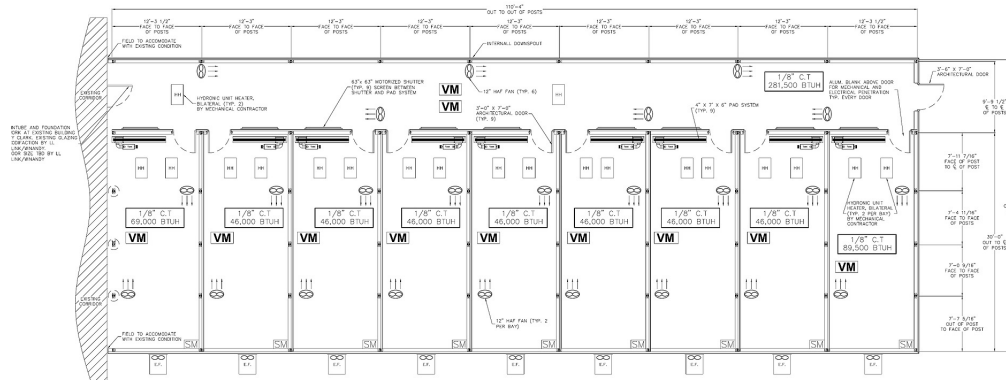
**At project completion**

- 120 individual houses
- 88,500 square feet of greenhouse space
- 21% newly-built, 31% renovated, 48% as-is

# Floorplans for the new five-zone and nine-zone greenhouses.



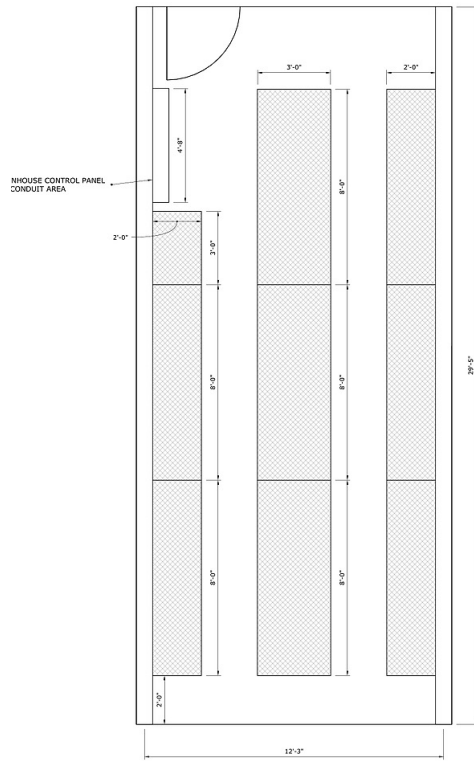
Large compartments:  
725 square feet



Small compartments:  
362 square feet

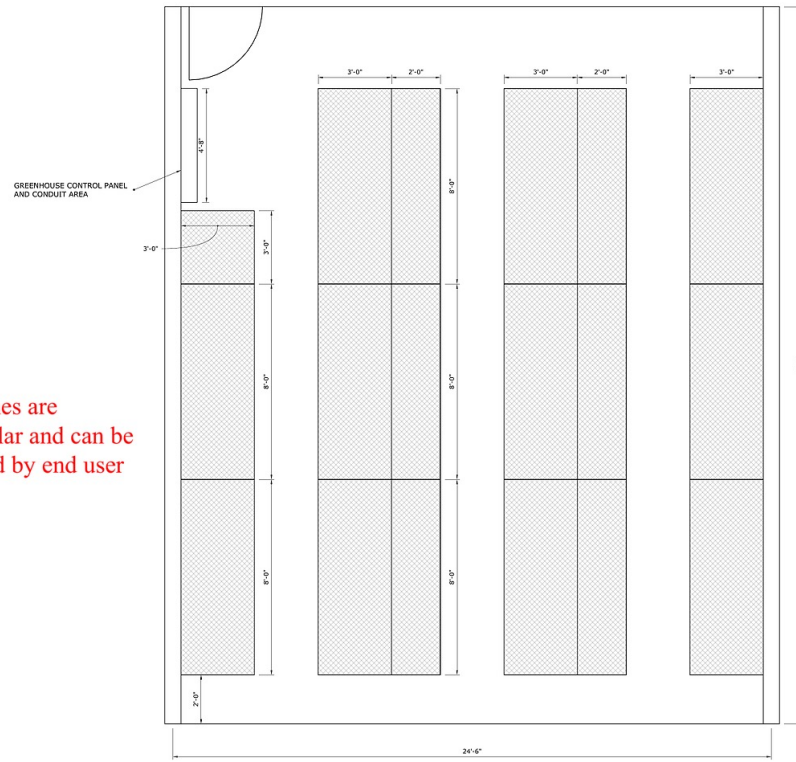
Bench layouts for the new greenhouse zones.

SMALL MODULE



156 square feet of bench space

LARGE MODULE



370 square feet of bench space

Benches are Modular and can be moved by end user